

# Shower Tray

SKU: AST9076SL

## SPECIFICATION SHEET

### DESCRIPTION

- Manufactured from premium sanitary grade ABS
- Square shape
- 2-Side left hand upstand
- Centre waste hole
- Leg reinforced base

### DIMENSIONS

- 900\*760\*100mm
- 35mm upstand
- Tolerance level: 2mm

### STANDARD

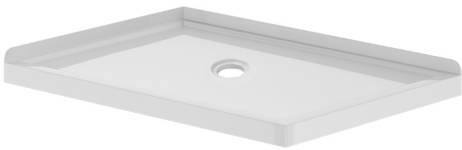
- Comply with NZ standard

### COLORS/FINISHES

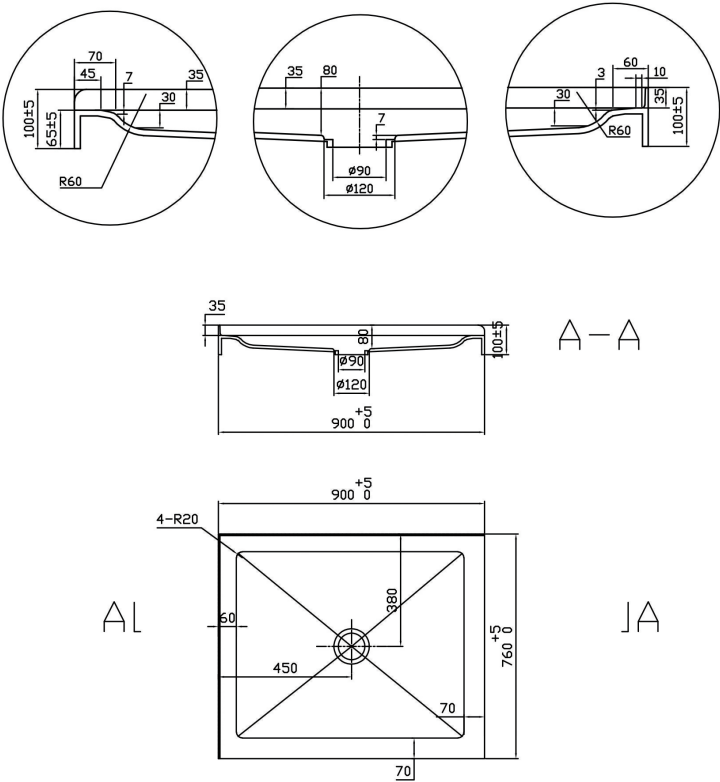
- White

### WARRANTY

- 5-Year limited warranty



### CRITICAL DIMENSIONS



# Shower Tray

SKU: AST9076SR

# SPECIFICATION SHEET

## DESCRIPTION

- Manufactured from premium sanitary grade ABS
- Square shape
- 2-Side right hand upstand
- Centre waste hole
- Leg reinforced base

## DIMENSIONS

- 900\*760\*100mm
- 35mm upstand
- Tolerance level: 2mm

## STANDARD

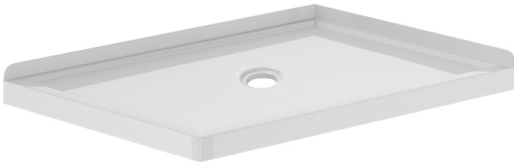
- Comply with NZ standard

## COLORS/FINISHES

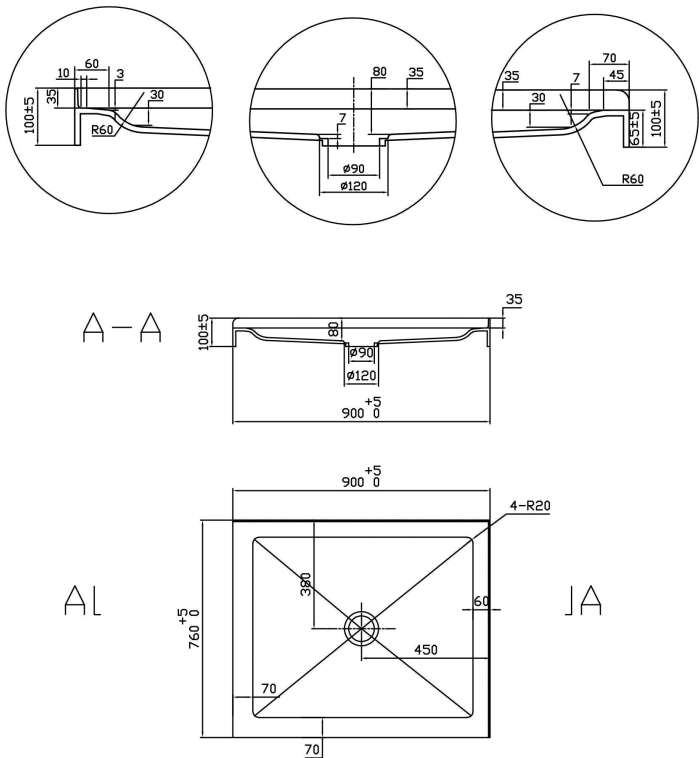
- White

## WARRANTY

- 5-Year limited warranty



## CRITICAL DIMENSIONS



# Shower Tray

SKU: AST9090R

## SPECIFICATION SHEET

### DESCRIPTION

- Manufactured from premium sanitary grade ABS
- Round shape
- 2-Side upstand
- Centre waste hole
- Leg reinforced base



### DIMENSIONS

- 900\*900\*100mm
- 35mm upstand
- Tolerance level: 2mm

### STANDARD

- Comply with NZ standard

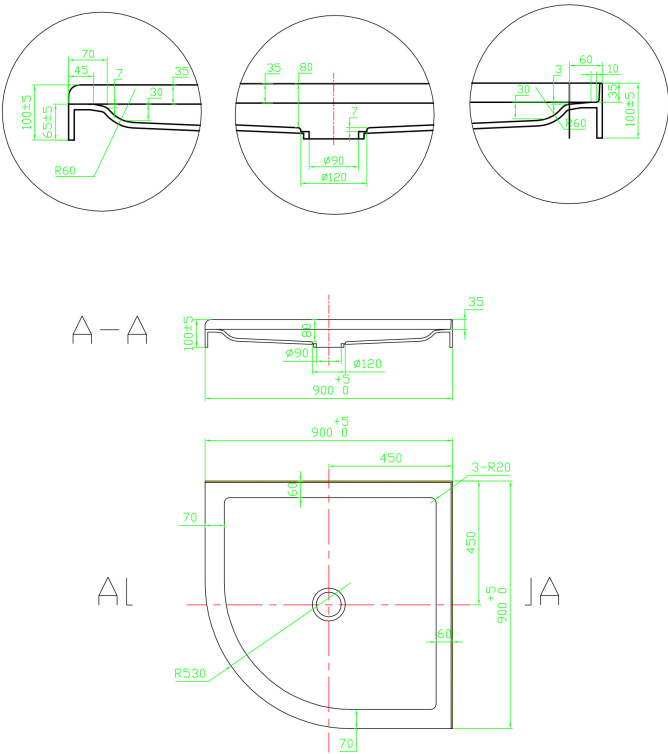
### COLORS/FINISHES

- White

### WARRANTY

- 5-Year limited warranty

### CRITICAL DIMENSIONS



# Shower Tray

SKU: AST0909S

## SPECIFICATION SHEET

### DESCRIPTION

- Manufactured from premium sanitary grade ABS
- Square shape
- 2-Side upstand
- Centre waste hole
- Leg reinforced base

### DIMENSIONS

- 900\*900\*100mm
- 35mm upstand
- Tolerance level: 2mm

### STANDARD

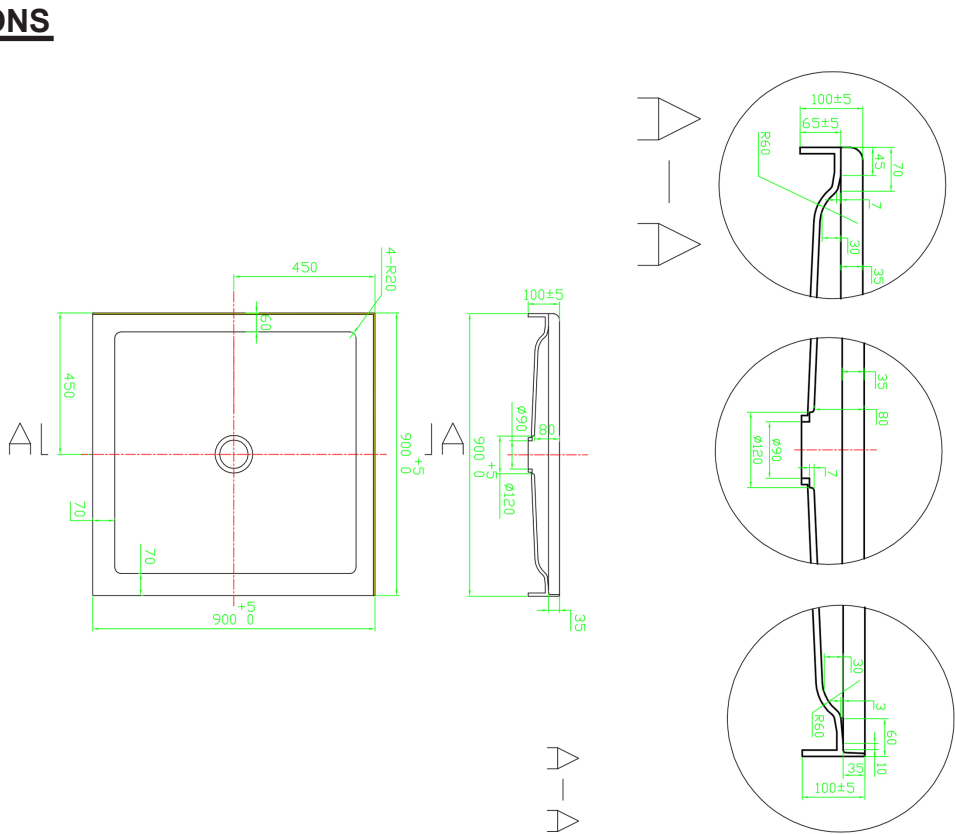
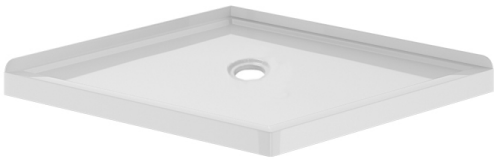
- Comply with NZ standard

### COLORS/FINISHES

- White

### WARRANTY

- 5-Year limited warranty





# Shower Tray

SKU: AST0909S-3

## SPECIFICATION SHEET

### DESCRIPTION

- Manufactured from premium sanitary grade ABS
- Square shape
- 3-Side upstand
- Centre waste hole
- Leg reinforced base

### DIMENSIONS

- 900\*900\*100mm
- 35mm upstand
- Tolerance level: 2mm

### STANDARD

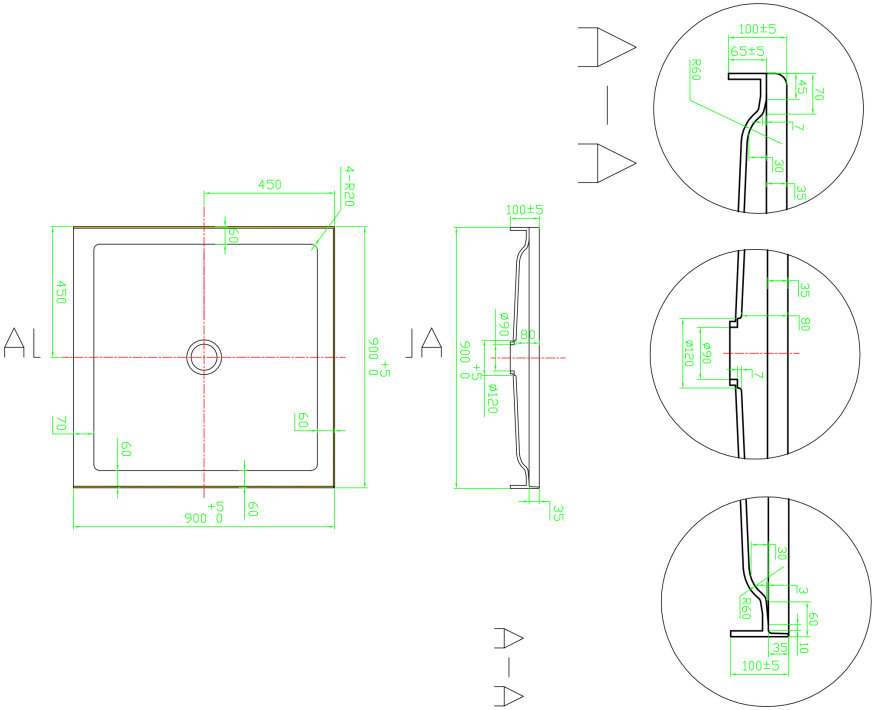
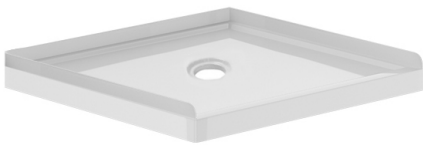
- Comply with NZ standard

### COLORS/FINISHES

- White

### WARRANTY

- 5-Year limited warranty



# Shower Tray

SKU: AST1010R

## SPECIFICATION SHEET

### DESCRIPTION

- Manufactured from premium sanitary grade ABS
- Round shape
- 2-Side upstand
- Centre waste hole
- Leg reinforced base

### DIMENSIONS

- 1000\*1000\*100mm
- 35mm upstand
- Tolerance level: 2mm

### STANDARD

- Comply with NZ standard

### COLORS/FINISHES

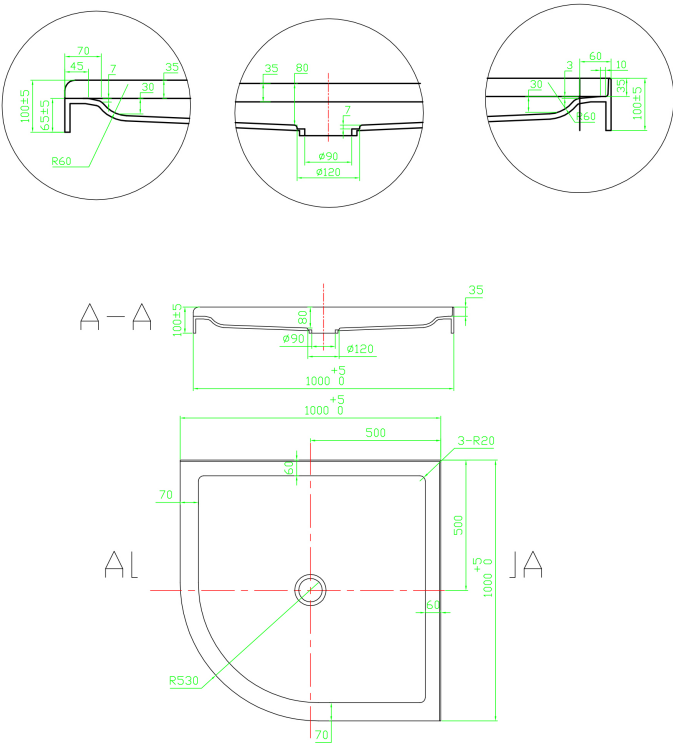
- White

### WARRANTY

- 5-Year limited warranty



### CRITICAL DIMENSIONS



# Shower Tray

SKU: AST1010S

## SPECIFICATION SHEET

### DESCRIPTION

- Manufactured from premium sanitary grade ABS
- Square shape
- 2-Side upstand
- Centre waste hole
- Leg reinforced base

### DIMENSIONS

- 1000\*1000\*100mm
- 35mm upstand
- Tolerance level: 2mm

### STANDARD

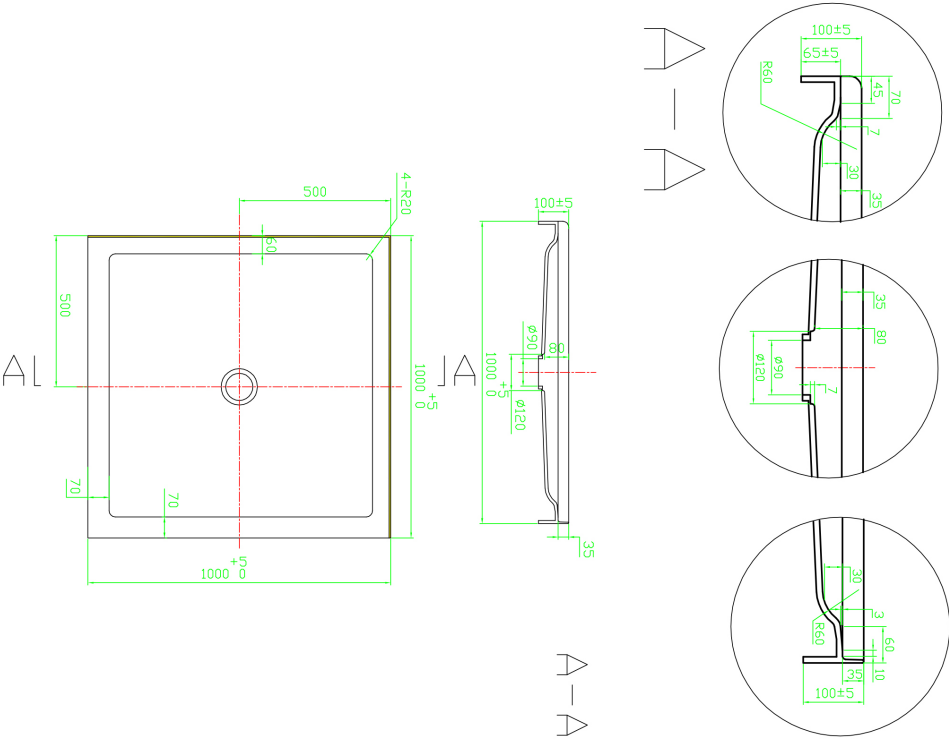
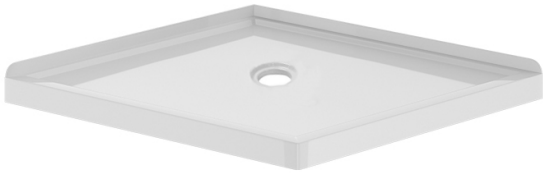
- Comply with NZ standard

### COLORS/FINISHES

- White

### WARRANTY

- 5-Year limited warranty



# Shower Tray

SKU: AST1010S-3

## SPECIFICATION SHEET

### DESCRIPTION

- Manufactured from premium sanitary grade ABS
- Square shape
- 3-Side upstand
- Centre waste hole
- Leg reinforced base

### DIMENSIONS

- 1000\*1000\*100mm
- 35mm upstand
- Tolerance level: 2mm

### STANDARD

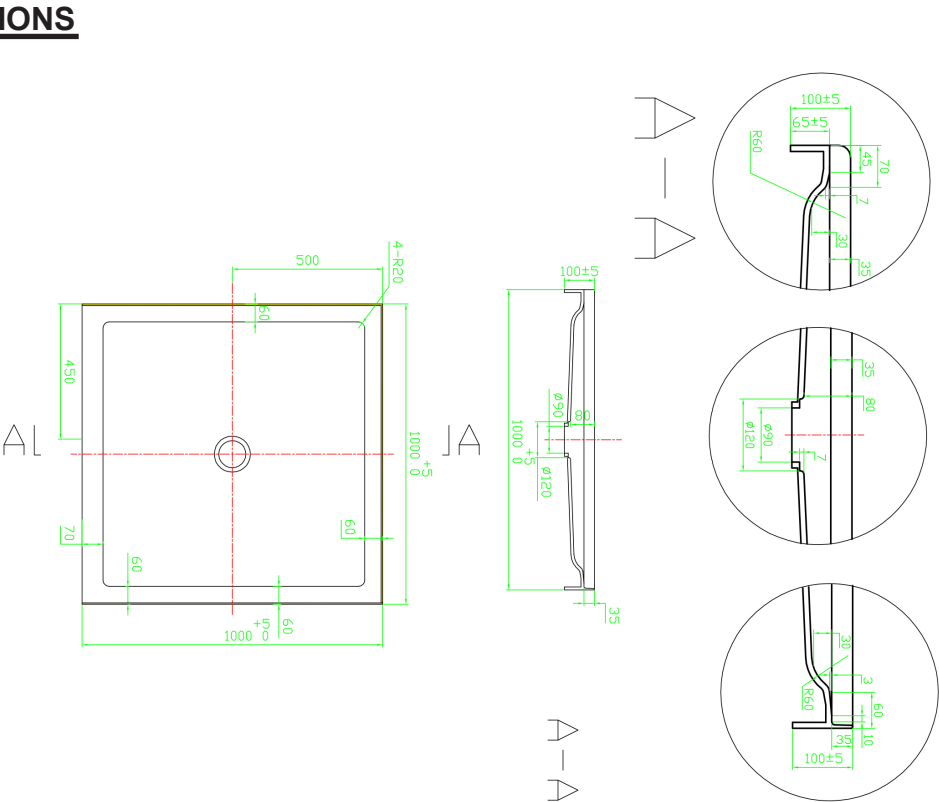
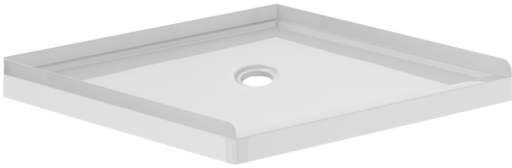
- Comply with NZ standard

### COLORS/FINISHES

- White

### WARRANTY

- 5-Year limited warranty



# Shower Tray

SKU: AST1290SL

## SPECIFICATION SHEET

### DESCRIPTION

- Manufactured from premium sanitary grade ABS
- Square shape
- 2-Side left hand upstand
- Rear waste hole
- Leg reinforced base

### DIMENSIONS

- 1200\*900\*100mm
- 35mm upstand
- Tolerance level: 2mm

### STANDARD

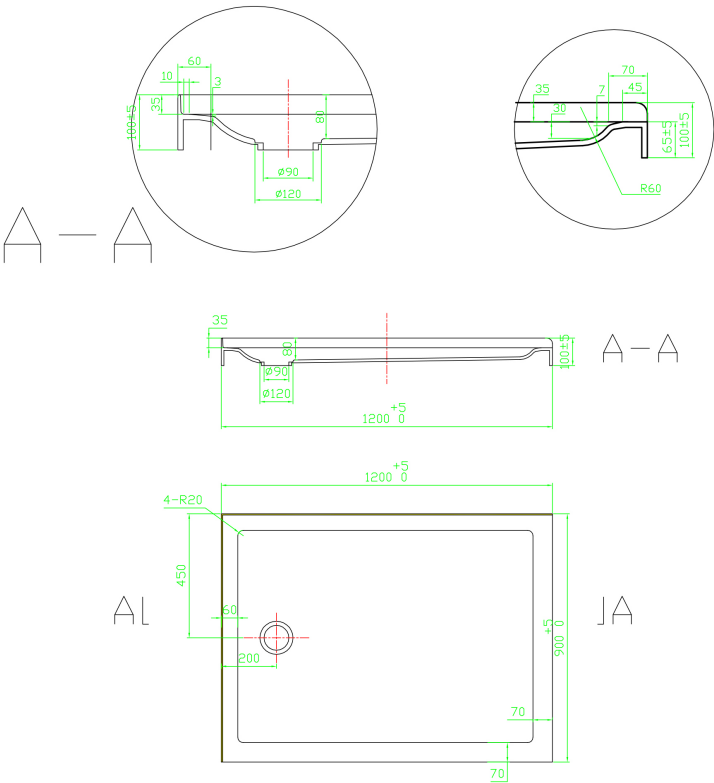
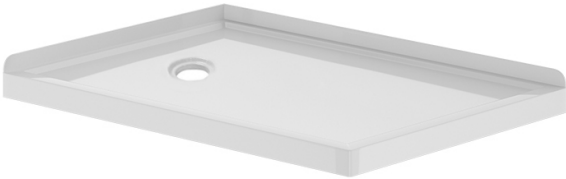
- Comply with NZ standard

### COLORS/FINISHES

- White

### WARRANTY

- 5-Year limited warranty



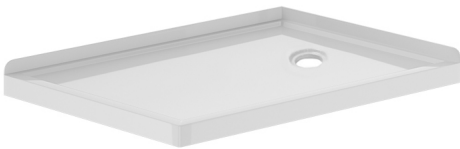
# Shower Tray

SKU: AST1290SR

## SPECIFICATION SHEET

### DESCRIPTION

- Manufactured from premium sanitary grade ABS
- Square shape
- 2-Side right hand upstand
- Rear waste hole
- Leg reinforced base



### DIMENSIONS

- 1200\*900\*100mm
- 35mm upstand
- Tolerance level: 2mm

### STANDARD

- Comply with NZ standard

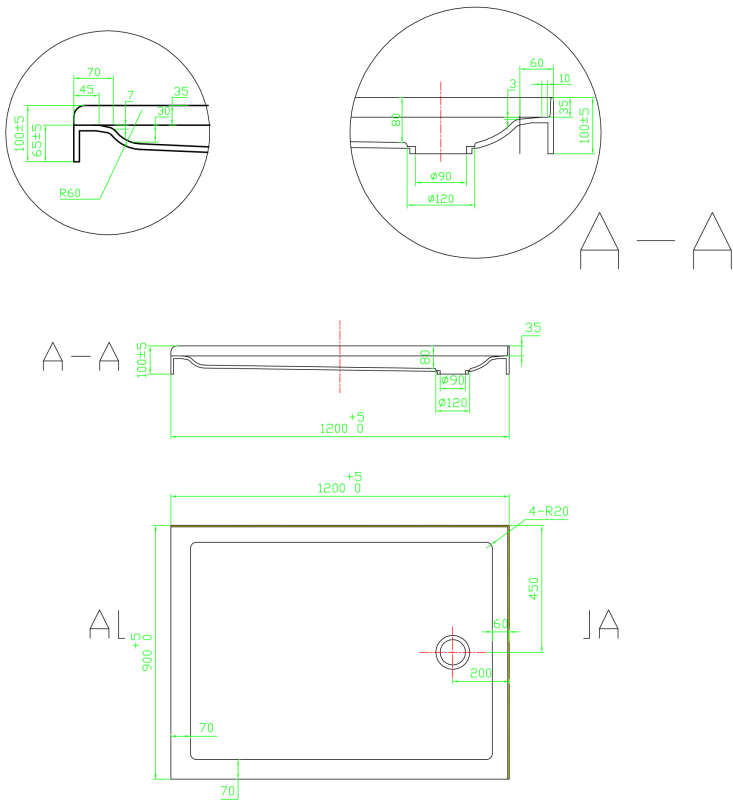
### COLORS/FINISHES

- White

### WARRANTY

- 5-Year limited warranty

### CRITICAL DIMENSIONS



# Shower Tray

SKU: AST1290S-3

## SPECIFICATION SHEET

### DESCRIPTION

- Manufactured from premium sanitary grade ABS
- Square shape
- 3-Side upstand
- Centre waste hole
- Leg reinforced base

### DIMENSIONS

- 1200\*900\*100mm
- 35mm upstand
- Tolerance level: 2mm

### STANDARD

- Comply with NZ standard

### COLORS/FINISHES

- White

### WARRANTY

- 5-Year limited warranty

