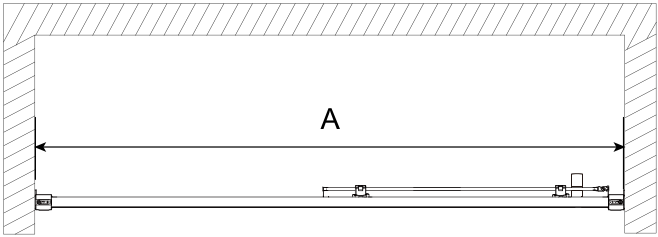


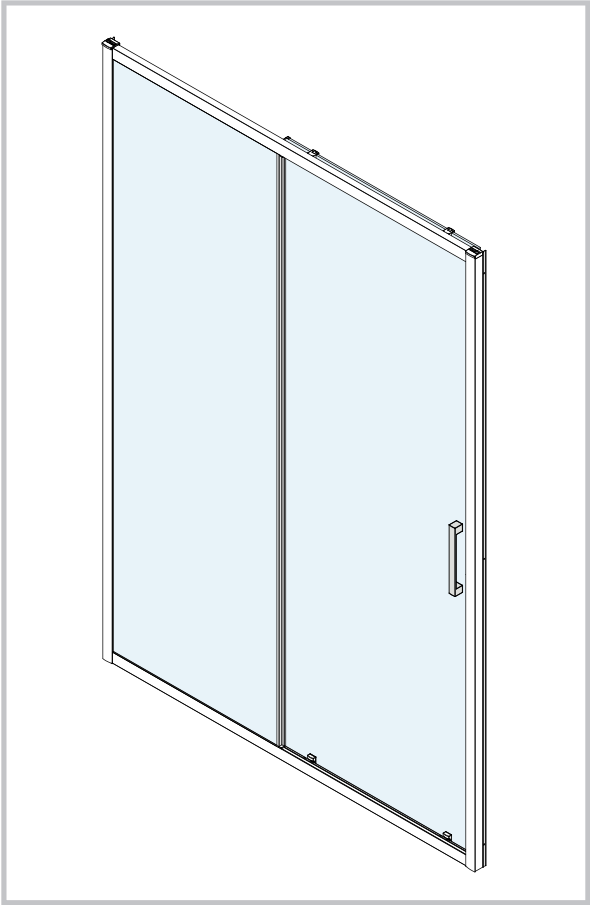
DSSA

Installation Instructions

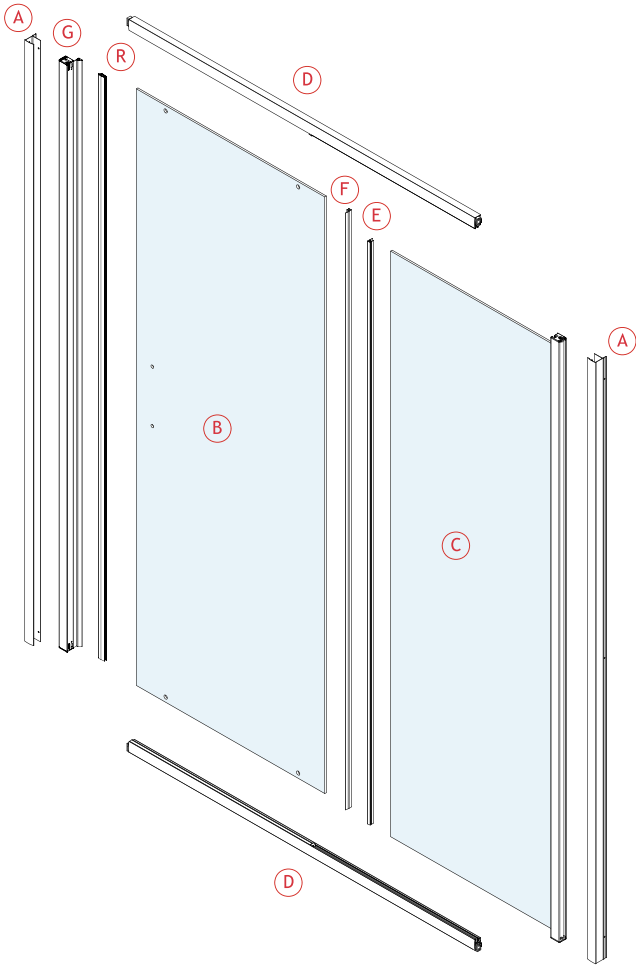
If you install the product in a way that differs from this manual this will void all warranty. Before installation check that the product meets all your requirements and is not damaged. By proceeding with installation, you accept the condition of the product.



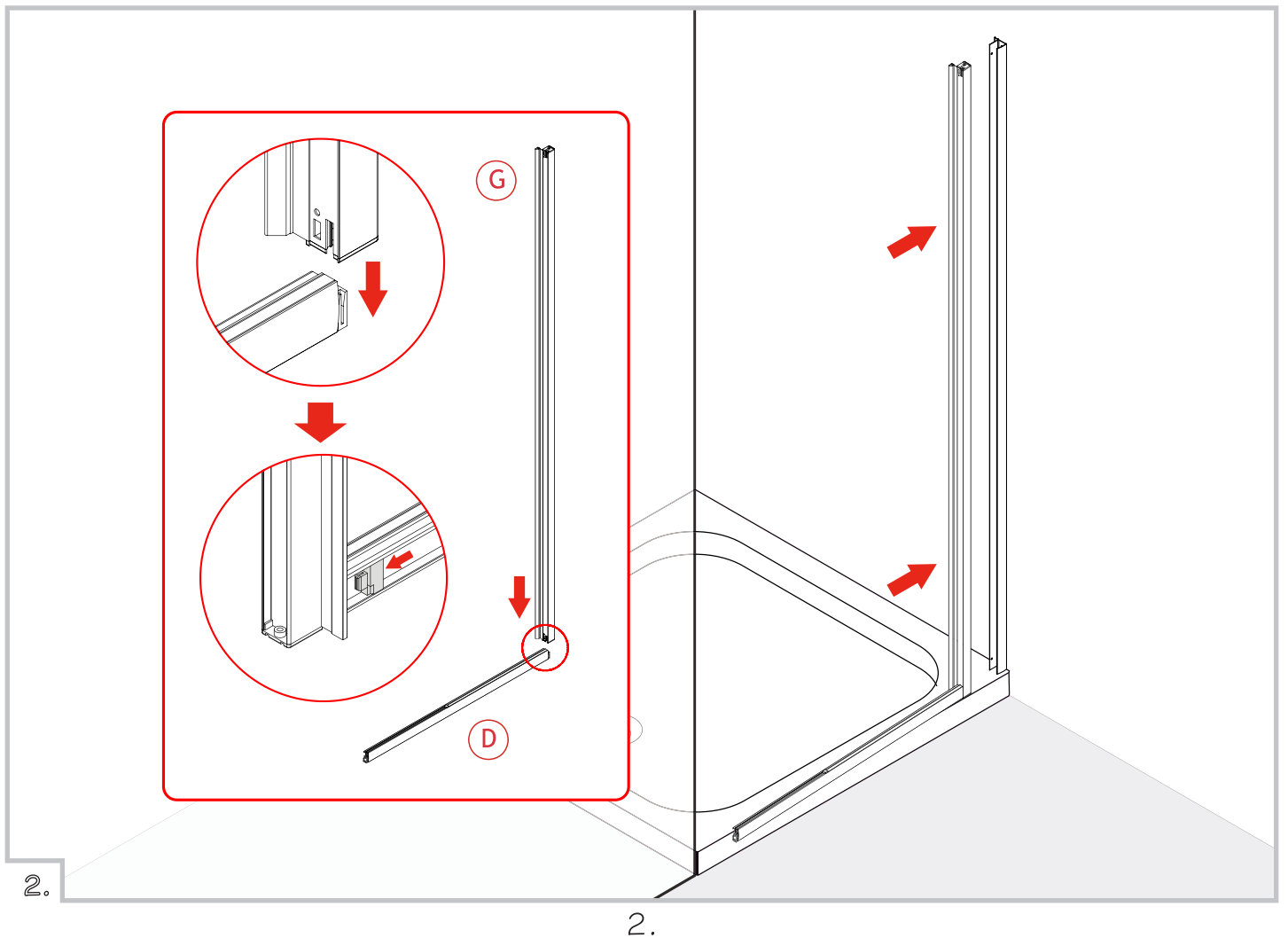
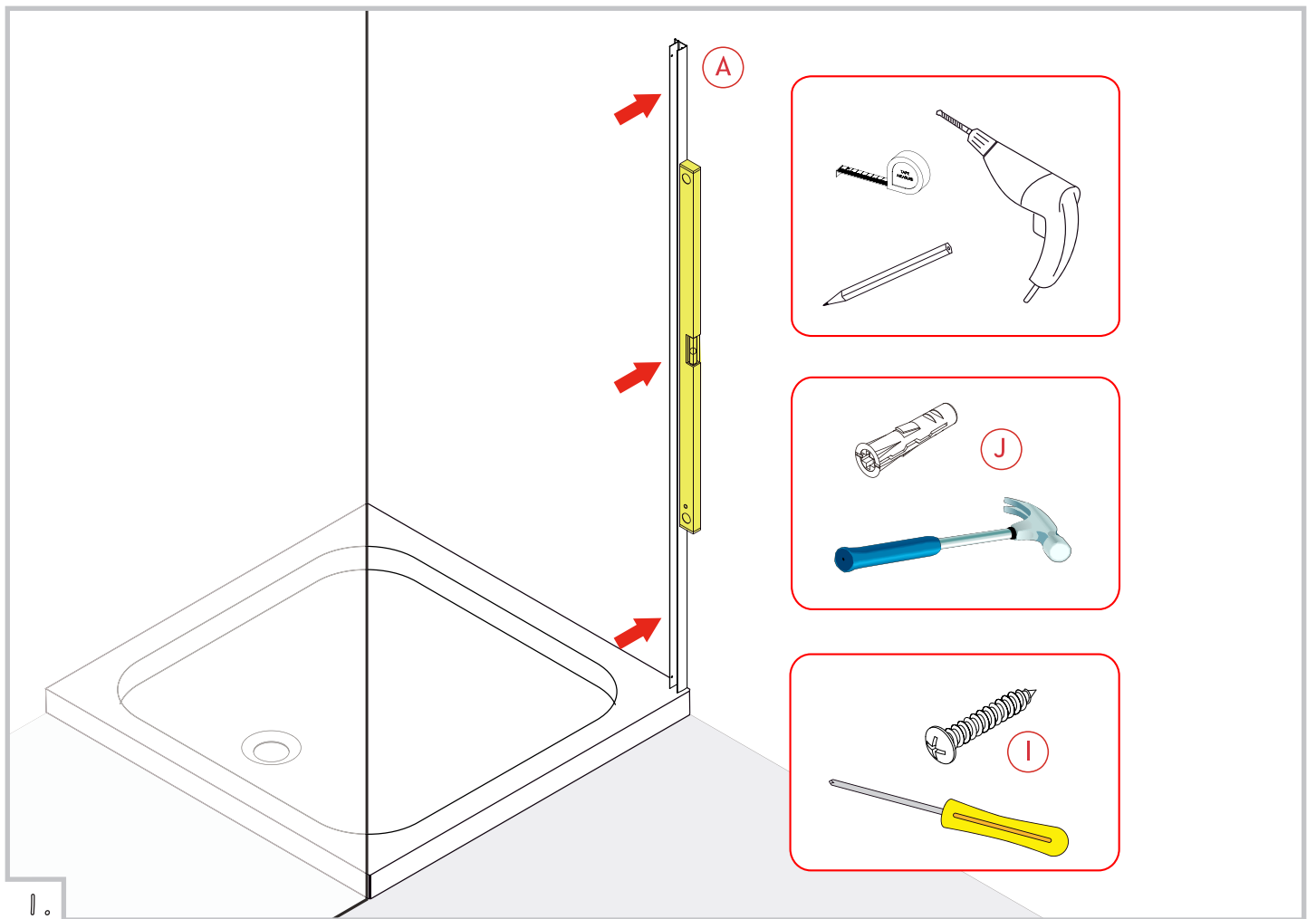
Size	A
120	1170-1210

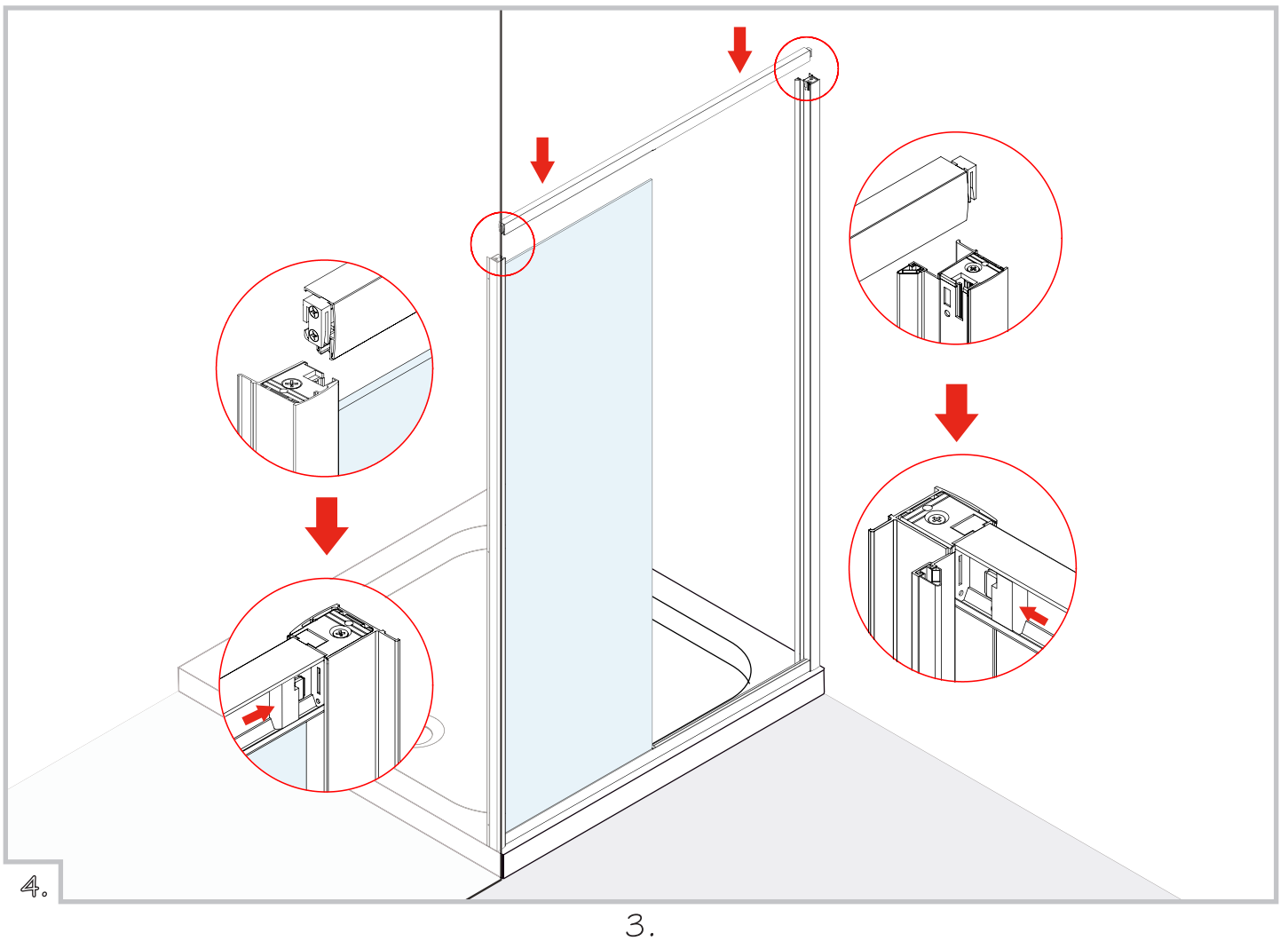
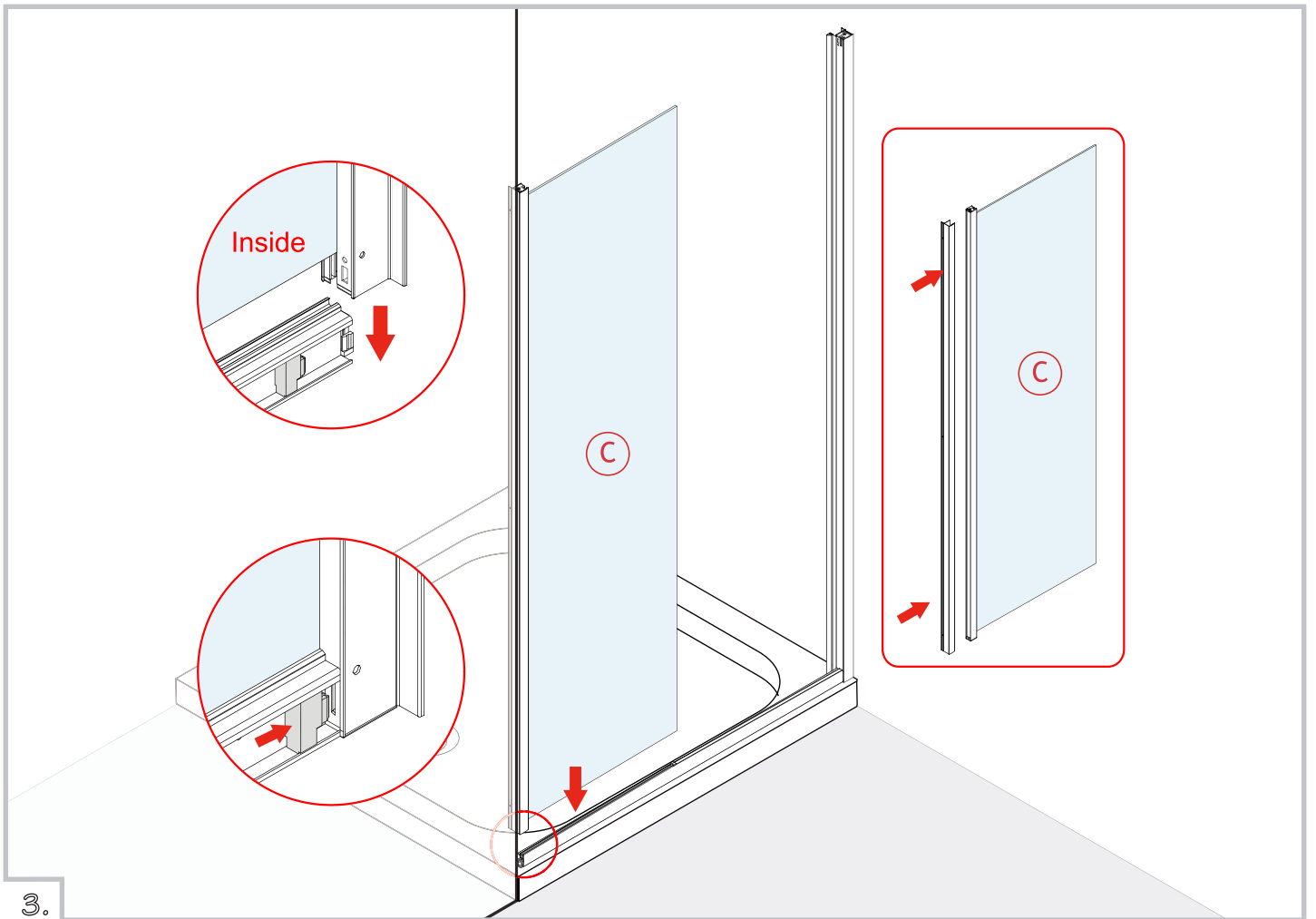


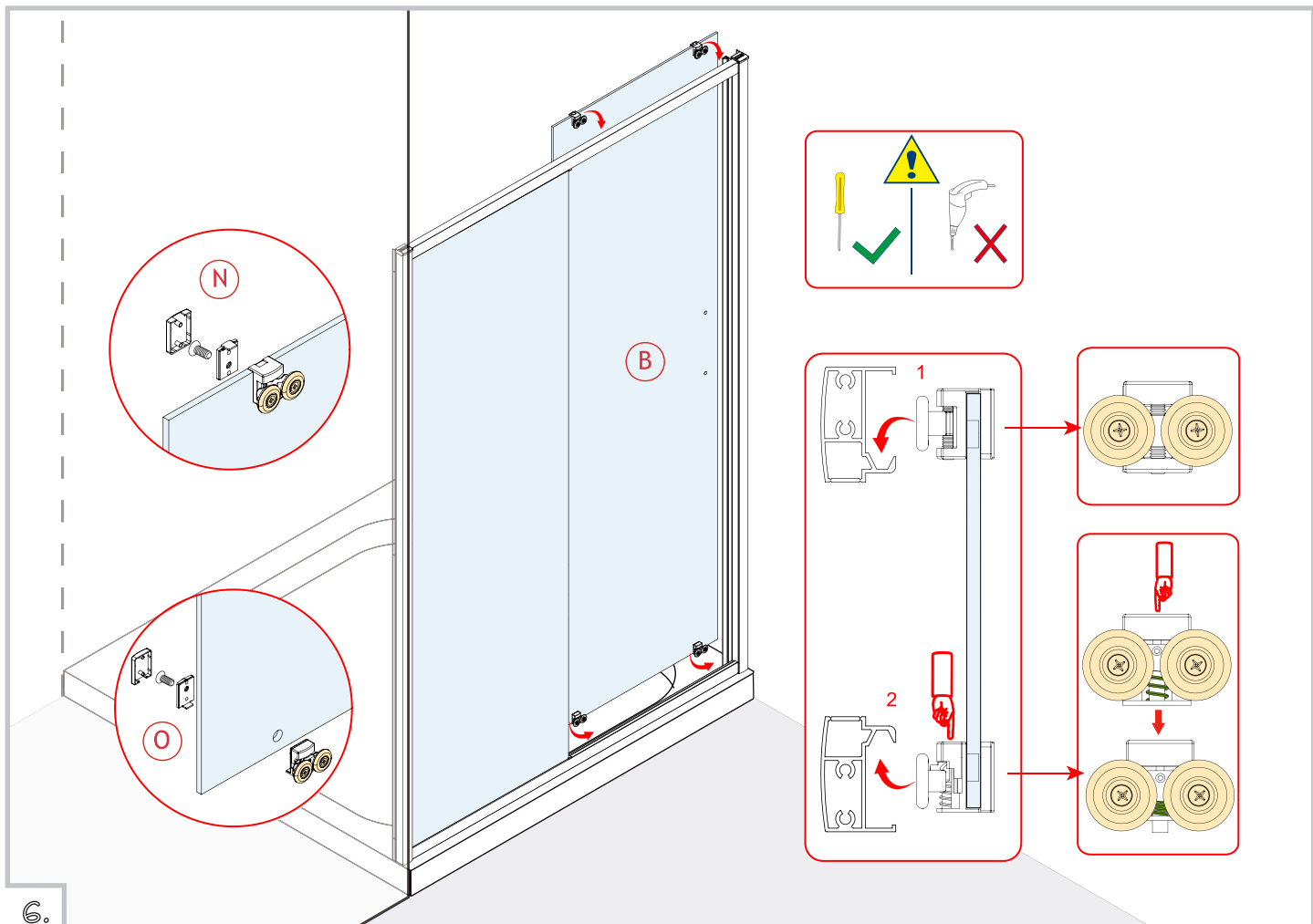
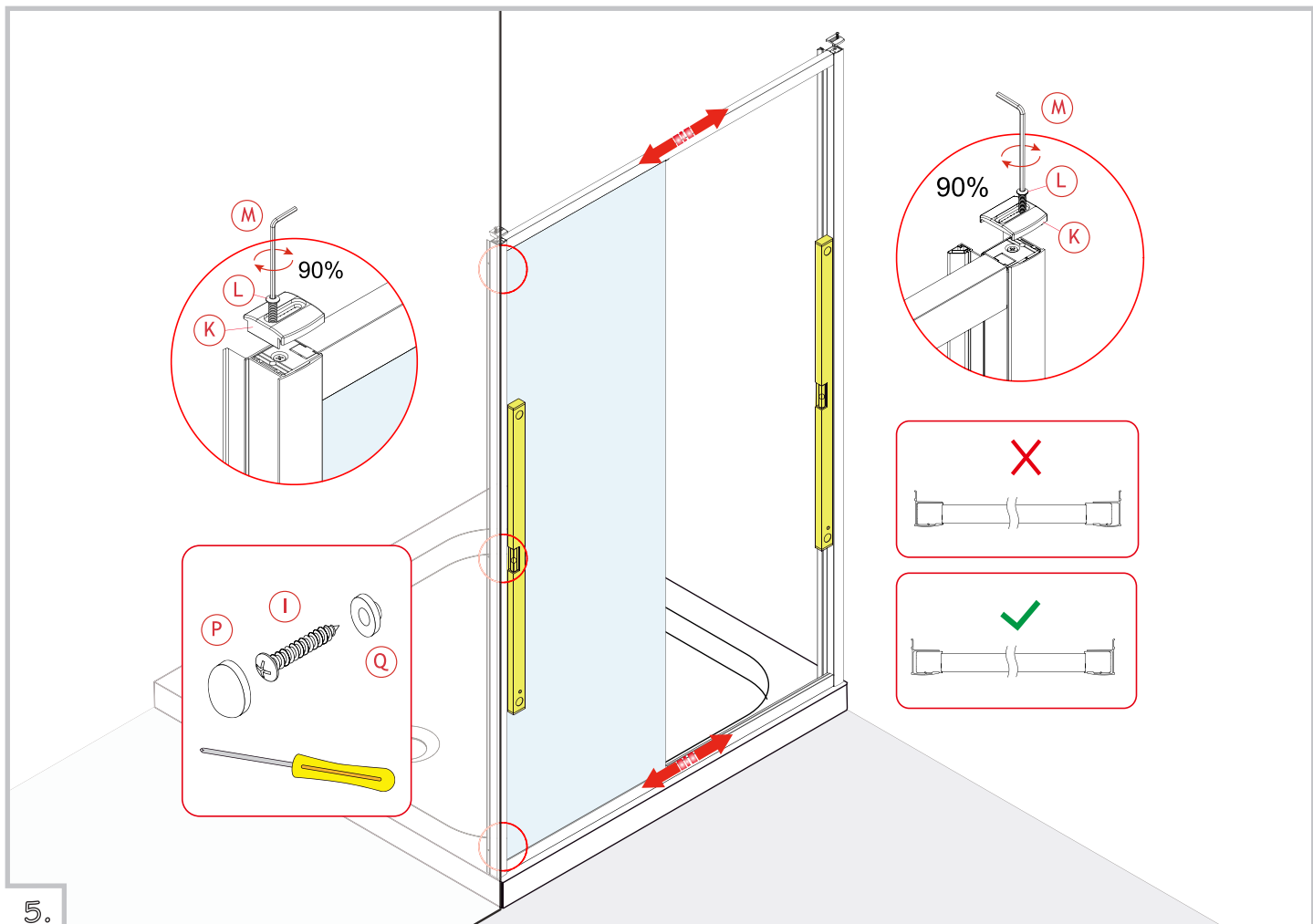
ITEM		Quant.
(H)		1 Pc
(I)		6 Pc
(J)		6 Pc
(K)		1L+1R Pc
(L)		2 Pc
(M)		1 Pc
(N)		2 Pc
(O)		2Pc
(P)		6 Pc
(Q)		6 Pc

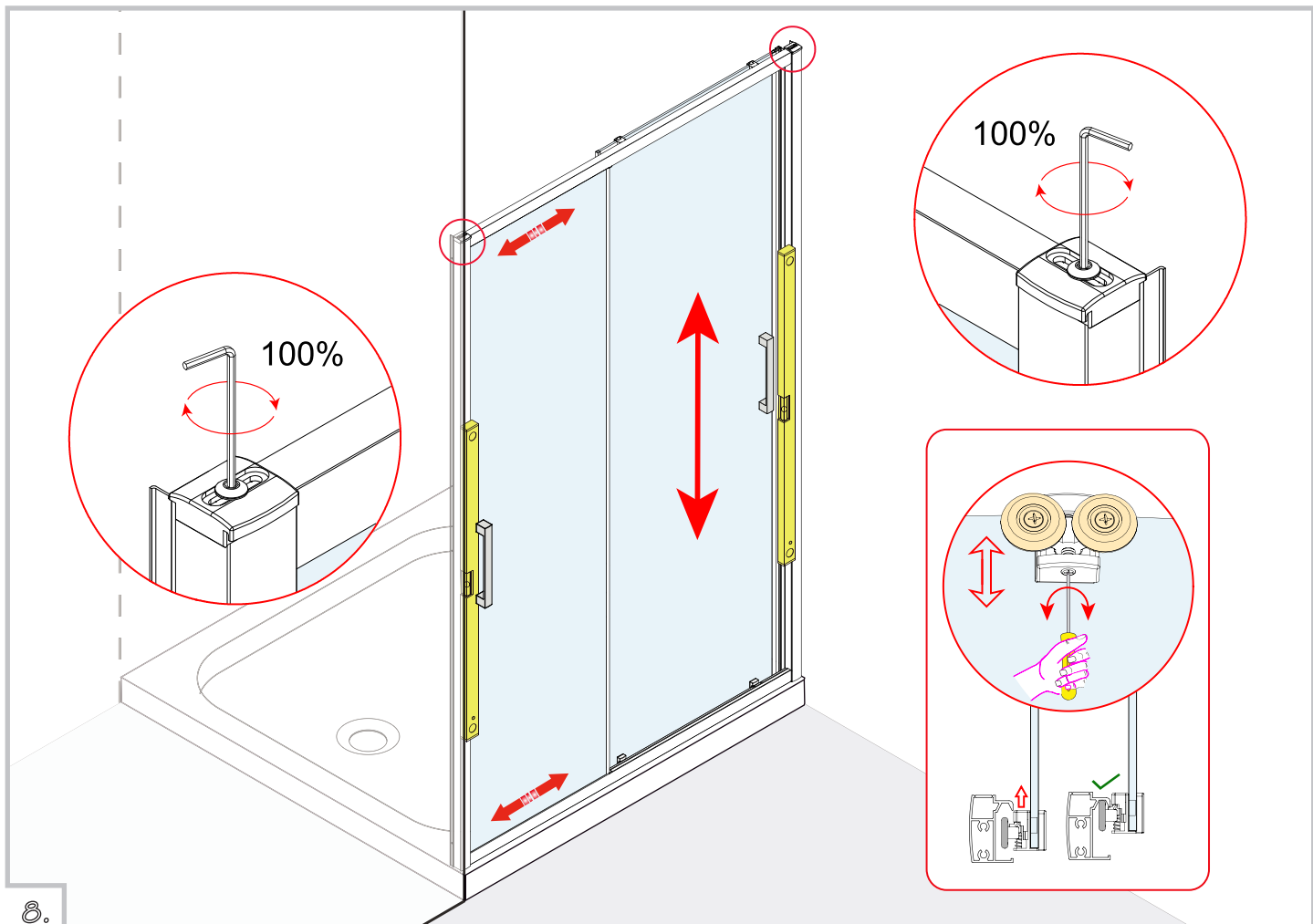
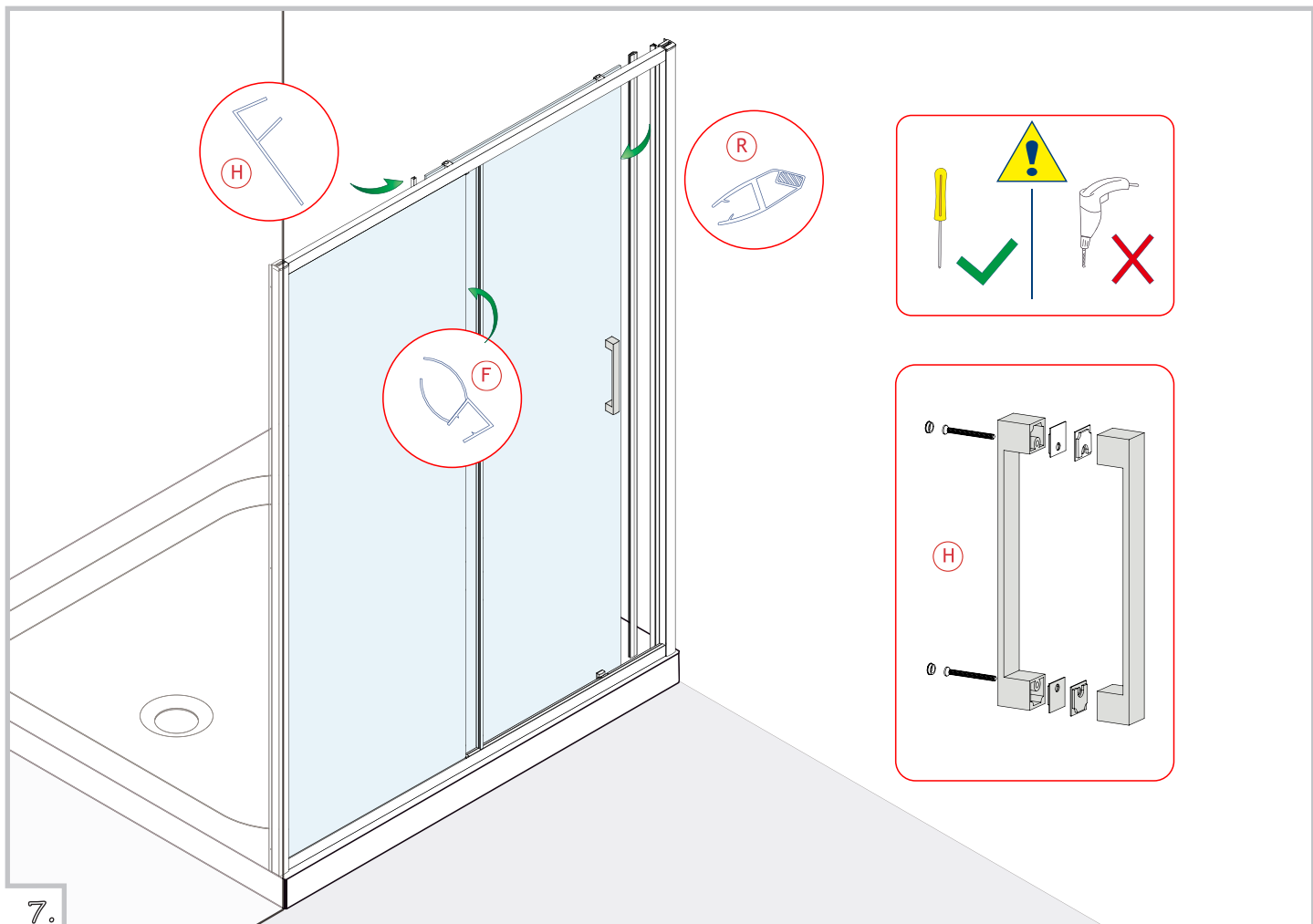


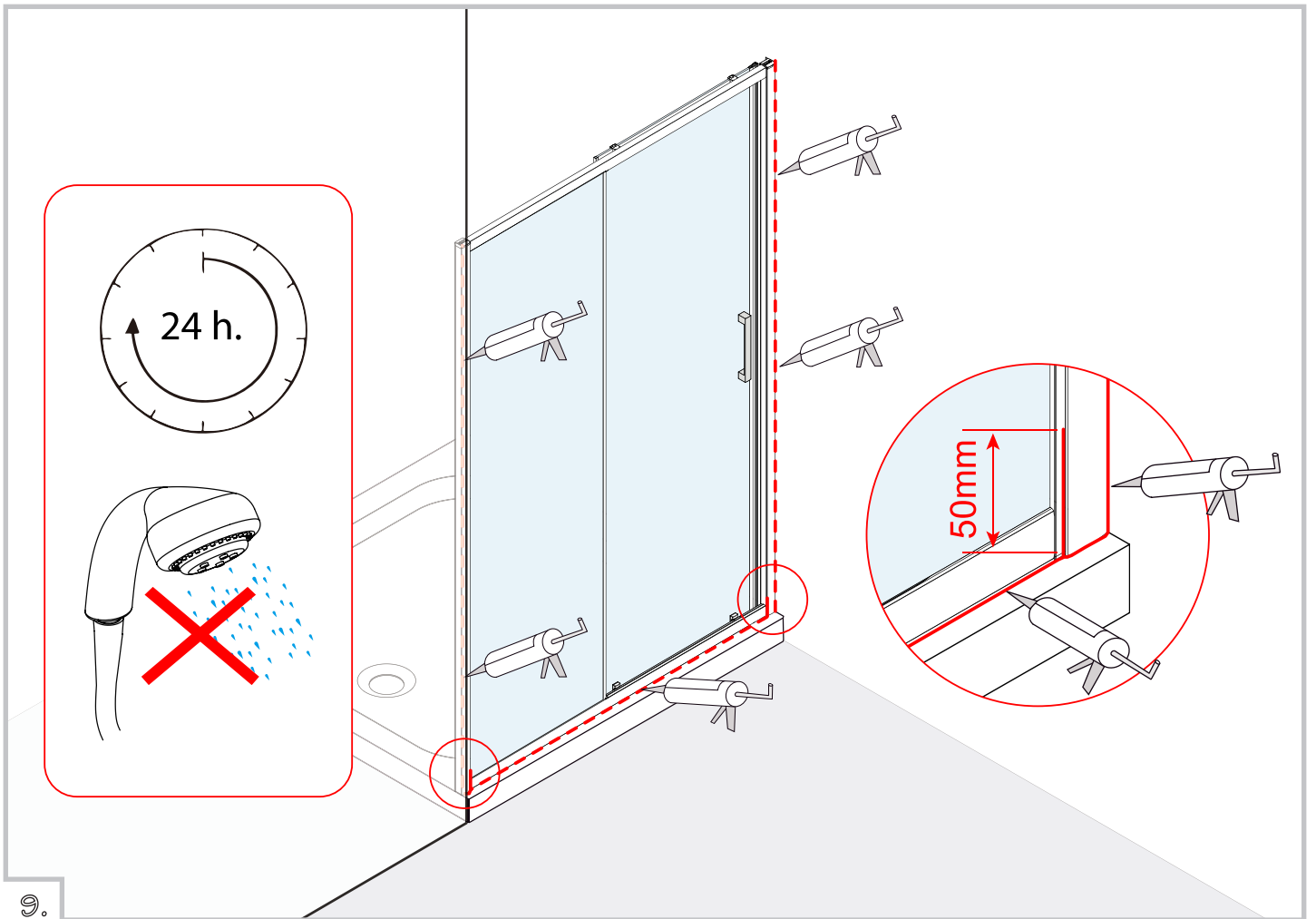
part list











9.